



# SKILLBEE SOLUTION

## SAP S4 HANA PROFESSIONAL CERTIFICATION COURSE

2 MONTHS ADVANCE COURSE



<https://skillbee.co.in/>



# CONTENT

- 01** COMPANY OVERVIEW
- 02** MODULE FOR SAP S4 HANA
- 03** CERTIFICATION COURSES WE OFFER
- 04** ADVISORY FACULTY FROM INDUSTRY
- 05** TESTIMONIALS OF OUR STUDENTS AND THEIR PLACEMENT DETAILS
- 06** OTHER DETAILS REGARDING THE COURSE
- 07** BENEFITS OF JOINING CERTIFICATION COURSE
- 08** CONTACT INFORMATION

# COMPANY OVERVIEW

01



## VISION



SkillBee Solution, our vision is to empower individuals and organizations through high-quality training and certification programs, enabling them to acquire the knowledge, skills, and credentials necessary for personal and professional success in the rapidly evolving world. We strive to be a leading institute that fosters lifelong learning, innovation, and excellence, shaping the future workforce and contributing to societal progress.

# COMPANY OVERVIEW



## ABOUT US



SkillBee Solution, ISO 9001: 2015 certified company (certificate number: IMC-CTCY-22-0513477), registered under the Registration Act, 1958 with Government of India Registration Number C/1788348 and affiliated with Life Sciences Sector Skills Council (SSC) - presents unique, friendly and interactive platform to get rid of all your GMP related glitches.

# MODULE FOR SAP\_ABAP

02

MODULE FOR SAP S4 HANA



## Module 1. ERP INTRODUCTION

- Manual Business process and its limitations
- ERP Products
- Introduction to SAP and its Modules
- Role of ABAP Consultant in SAP Projects
- Role of ABAP Consultant in object Development

## Module 2. LOCAL STRUCTURES

- Creating Structures
- Nested Structures
- Including Structures
- Move and Move-Corresponding Statements

## Module 3. SAP R/3 ARCHITECTURE

- Application Server Services
- ABAP Workbench
- R/3 Landscape
- Client Concept in SAP

## Module 4. DICTIONARY OBJECTS

- Standard Database tables
- Types of DB tables
- Client Dependent Tables
- Client Independent Tables
- Table creation minimum settings



# MODULES FOR SAP\_ABAP

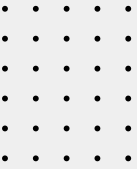
- Table creation using direct data types
- Table creation using data elements and domains
- Currency and Quantity fields
- Reference tables and Reference fields
- Dictionary Structures
- .Append and .Include Structures
- Table Maintenance Generator
- Events at Table Level
- Table Buffering
- Primary and Secondary Indexes
- Foreign key Relationship
- Check Tables and Value Tables
- Views View Cluster
- Lock objects
- Type-Groups
- Table Types
- Search Helps

## **Module 5. ABAP BASIC STATEMENTS**

- Data, Write, Constant and Parameter Statements and their attributes
- CONDITIONAL and LOOPING Statements
- Check Boxes and Radio Buttons
- Submit, Import, Export keywords
- Field-symbols

## **Module 6. DATABASE ACCESS**

- Open and Native SQL statements ☒
- Select, Insert, Delete and update statements



# MODULES FOR SAP\_ABAP

- Select-End Select
- Insert, Delete and Modify statements
- Select-single , Select up to 1 rows
- Cursors - Open SQL & Native SQL

## Module 7. STRING FUNCTIONS

- Shift
- Replace
- Translate
- Overlay
- Strlen
- Condense
- Concatenate
- Split

## Module 8. INTERNAL TABLES

- Introduction and Necessity of Internal Tables
- Types of Internal tables
- Select-Options statement
- Ranges
- Append
- Describe
- Read
- modify
- Sort
- Clear
- Refresh
- Free delete
- Transporting keyword
- Collect statement



# MODULES FOR SAP\_ABAP

## **Module 9. SELECTION SCREEN PROGRAMMING**

- Creating Simple and Tabbed Blocks
- Creating Push Buttons and Labels
- Dropdown List boxes
- Grouping Selection screen elements
- Event Handling in Selection Screens
- SCREEN Structure
- Creating Sub-screens
- Creating Application.
- Toolbar Push Buttons Using Function Keys
- Menu Painter tool
- At User-command event
- At PF-Status event

## **Module 10. MESSAGE CLASSES**

- Creating Message classes
- Types of Messages
- Using Messages

## **Module 11. REPORTS**

- Classical Reports
  - o Single Table
  - o Multiple Tables using Joins
- Control-Break Reports
- Difference between at new and on change of events
- Interactive Reports using
  - o System field SY-LISEL
  - o HIDE Statement
  - o Get Cursor Statement For All Entries
- Sequence of events execution
- Scheduling Reports in background statically and dynamically





# MODULES FOR SAP\_ABAP

- Background job overview
- Logical Database Reporting

## **Module 12. MODULARIZATION TECHNIQUES**

- Internal and External Subroutines
- Actual and Formal Parameters
- Pass by Value and Reference
- Changing Parameters
- Passing Internal Tables as Parameters
- Include Programs
- Macros and Function Modules

## **Module 13. MODULE POOL PROGRAMMING**

- Introduction to Screen Painter tool
- Events in Module Pool o PBO, PAI, POV, POH
- Working with Table Control
- Tab Strip Control
- Designing Sub screens
- Modal Dialog boxes
- Drop Down List Boxes
- Navigating between Screens
- Select-option Functionality in MPP
- Field Validations
  - o Automatic Field Validations
  - o Flow Logic Validations
  - o Module Pool Validations
  - o AT Exit-Command
  - o Chain-End chain

## **Module 14. FUNCTION MODULES**

- Creating Function Groups
- Function Builder tool
- Types of Parameters in Function Modules



# MODULES FOR SAP\_ABAP

- Optional and Default Parameters
- Exception Handling in Function Modules

## **Module 15. DEBUGGING**

- Setting Break points
- Navigating through the breakpoints
- Setting Watch points

## **Module 16. FILE HANDLING**

- File Management on Presentation Server
- File Management on Application Server
- Working with Datasets
  1. OPEN, READ ,CLOSE Dataset
  2. Transfer statement
  3. SET and GET Dataset
  4. DELETE Dataset

## **Module 17. SMART FORMS**

- Designing and Passing Data to Smart Forms
- Calling smart forms from Driver Program
- Working with Loop and Program lines
- Graphic Management in Smart forms
- Including Standard texts in smart forms
- Reading and Modifying Standard Texts Dynamically
- Transporting Standard Texts
- Copy Windows
- Working with Tables
- Alternative Conditions
- SMART STYLES
- Text Modules
- Working with Templates
- Control level events in smart forms
- Migrating Scripts to Smart forms



# MODULES FOR SAP\_ABAP

- Debugging Smart forms
- Converting Smart forms to PDF format
- Consolidated Example covering important nodes of smart forms

## **Module 18. FILE HANDLING**

- File Management on Presentation Server
- File Management on Application Server
- Working with Datasets
  - OPEN, READ ,CLOSE Dataset
  - Transfer statement
  - SET and GET Dataset
  - DELETE Dataset

## **Module 19. BDC**

- Direct Input Method
- Call Transaction Method
- Error Handling in Call Transaction
- Session Method
- Recording Transactions with single screen and Multiple screens □ BDC using Table Control
- Data Transfer in Background

## **Module 20. LSMW**

- Using Direct Input Method
- Using Batch Input Recording
- Transporting LSMW Settings

## **Module 21. SAP SCRIPTS**

- Designing SAP Scripts and Creating Print Program
- Types of Symbols in SAP Scripts
- Image Uploading and displaying in SAP Scripts
- Creating Standard Texts and including Standard Texts in Scripts Modifying Standard Layouts
- Differences between Scripts and Smart Forms



# MODULES FOR SAP\_ABAP ON HANA

## DAY-1

### DICTIONARY OBJECTS

- Standard Database tables
- Types of DB tables
- Client Dependent Tables
- Client Independent Tables
- Table creation minimum settings
- Table creation using direct data types
- Table creation using data elements and domains
- Check Tables and Value Tables
- Views
- View Cluster
- Lock objects
- Type-Groups
- Table Types
- Search Helps

## DAY-2

### SAP ENHANCEMENTS Customer-Exits

- Identifying Customer Exits
- Function Exits
- Menu Exits
- Screen Exits

### BADI's

### ENHANCEMENT FRAMEWORK

- Enhancement SPOTS
- Enhancement Implementations
- KERNEL BADI's
- Source-Code Enhancement
- Function Group Enhancement
- Class Enhancement



# MODULES FOR SAP\_ABAP ON HANA

## DAY-3

### OOPS CONCEPTS

- Features of OOPS concepts
- Introduction to CLASS and OBJECT
- Difference between structures and classes
- Creation of Classes in different Programming Languages
- Types of ABAP Classes
- Class-Components
- Visibility Sections
- Local Class Creation
- Global Class Creation using CLASS BUILDER Tool
- Instance and Static Attributes
- Instance and Static Methods
- RETURNING keyword / Parameter
- Exception Handling (Local & Global)
  1. Standard Exceptions
  2. Try and Catch Blocks
  3. Standard Exception Messages
  4. User Defined Exceptions
  5. Raising Keyword
  6. CLEANUP Block
  7. Hierarchy of Exceptions
- ME Keyword
- LOAD keyword
- Converting Local class to Global Class

## DAY-4

- Constructors
  - o Instance Constructors
  - o Static Constructors



# MODULES FOR SAP\_ABAP ON HANA

- o Parameters to Constructors
- o Class Loading
- Inheritance (Local & Global)
  - o Types of Inheritance
  - o Hierarchy of Constructor execution
- Exception Classes with OTR
- Exception Classes with Message classes
- Polymorphism
  - o Method Overloading
  - o Method Overriding
  - o REDEFINITION Keyword
  - o SUPER Keyword
- Final Classes and Final Methods
- Abstract Classes (Local & Global)
- Interfaces (Local & Global)

## **DAY-5**

- Role of ABAP consultants in SAP HANA
- Data to Code Vs Code to Data Approach
- Introduction to HANA Studio
- Native HANA Development
- Introduction to SQL and Database Objects Schema
- Row Store Table Vs Column Store Table
- Database Tables – CRUD Operations

## **DAY-6**

- Transaction Control Statements
- Order By, Group By, Having, Where Clauses
- Primary key and Foreign Key Constraints
- Global Vs Local Temporary Tables



# MODULES FOR SAP\_ABAP ON HANA

- Defining and Managing
- Triggers Sequences
- Synonyms
- Altering Database Objects
- Table Types
- Procedures
- Functions
- Temporary Internal Tables

## DAY-7

- Conditional and Looping statements
- Cursors
- Exception Handling
- Views
- Arrays
- Joins
- Indexes
- SQL Functions
- STORED PROCEDURES
- Creating Stored Procedures
- Creating Database Procedure Proxies
- Consuming Stored Procedure from ABAP Reports
- Scalar Functions
- Table Functions3

## DAY-8

### **ADBC (ABAP DATABASE Connectivity)**

- Introduction to ADBC Framework
- Consuming Select Queries in ABAP Reports using ADBC
- Parameter Binding in Queries using ADBC
- Consuming Stored Procedures using ADBC
- Parameter Binding in Stored Procedures using ADBC
- Accessing DDL and DML statements using ADBC



# MODULES FOR SAP\_ABAP ON HANA

## DAY-9 - DAY-10

### **AMDP(ABAP Managed Database Procedures)**

- Introduction to AMDP and ADT
- Creating AMDP's
- Consuming AMDP's from ABAP Reports
- AMDP Vs Stored Procedures
- Passing Parameters to AMDP
- Select-option functionality in AMDP

## DAY 11

### **IDA (Integrated Data Access)**

- Traditional ALV Vs ALV IDA
- Report Development using ALV IDA
- Manipulating Field catalog and Toolbar in ALV IDA Parameters and Select-Options in ALV IDA

## DAY 12 DAY 13

### **CDS (CORE DATA Services)**

- Introduction and Components of CDS Views
- CDS simple views
- Consuming CDS views from ABAP Reports and ALV IDA
- Reports
- CDS views with parameters
- Interactive ALV
- Select-option functionality in CDS views
- CDS Views with Functions and Arithmetic Expressions
- CDS Views with Joins and Associations
- CDS view Table Functions
- Exposing CDS Views as ODATA
- Service CDS View Extension



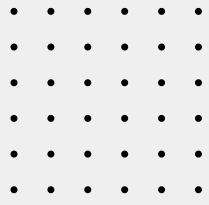
# CERTIFICATION COURSES WE OFFER

# 03

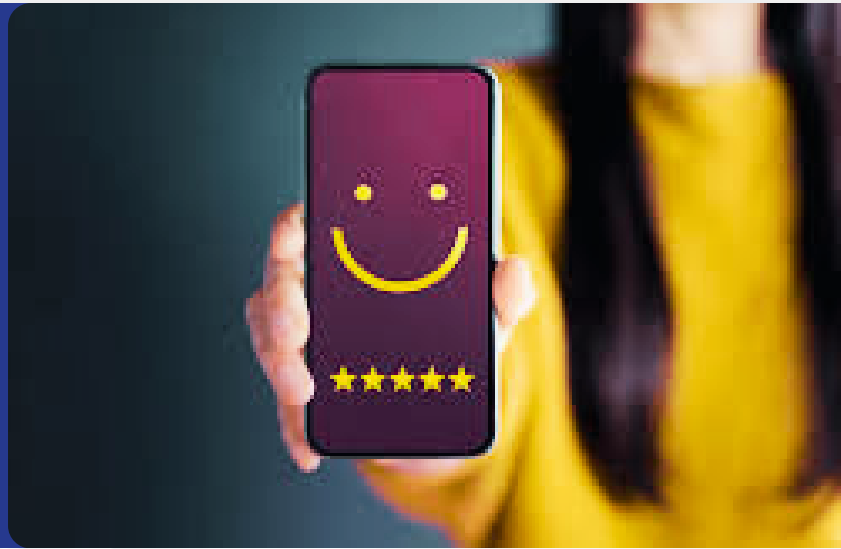
- Computerized System Validation
- Basic Laboratory Information Management Systems (LIMS)
- Advance Administrative Laboratory Information Management Systems (LIMS)
- Integrated Industrial training and certification in Pharmacovigilance, Clinical research, Clinical data management systems and Medical Writing
- Pharmacovigilance + Clinical Research Professional Certification
- Clinical data management + Clinical Research Professional Certification
- Medical Writing + Clinical Research Professionals Certification
- Pharmaceutical Regulatory Affairs Certification
- Pharmaceutical Quality Assurance professional training certification
- Pharmaceutical Validation Professional training
- Pharmaceuticals GMP Professionals Certification
- Pharmaceutical Engineering Professionals Certification
- Project Management Programme (PMP)

# ADVISORY FACULTY FROM INDUSTRY

Apart from regular faculty members, eminent and dynamic industrial professionals having rich industrial experience of up to 20-25 years have got associated with SkillBee Solution in regular, part-time, distance cum e-learning and Continuing Education Program (CEP). The industrial professionals who have joined SkillBee Solution in this initiative have worked in reputed pharmaceutical companies like Ranbaxy Laboratories Ltd, Cadila Pharma Ltd, Dr.Reddy's Laboratories, Quintiles, IPCA, Cipla etc. in the areas of GMP, GLP, Clinical Research, QA/QC, IPR, Regulatory Affairs, Drug Discovery, Public Health, Medical Coding etc. The continuing education training program has been launched with an initiative to provide training to work force in the industry on specific topics in short time period and to quick fix the issues with possible solutions by having an interface with senior industrial professionals.



## TESTIMONIALS OF OUR STUDENTS AND THEIR PLACEMENT DETAILS



Narendrapal Singh

Selected in Infosys

It's good platform to achieve the goal under the guidance of experience tutor faculty.



Bhumika Barve

Selected in Mindtree

Good staff for Computerized System Validation. Everyone is ready to help anytime.



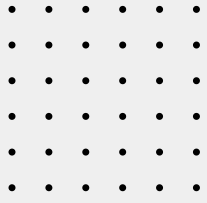
Saurabh Mashalkar

Selected in Cognizant, Hyderabad

Great learning Experience. Very helpful and informative.



**[For Google Review Click here](#)**

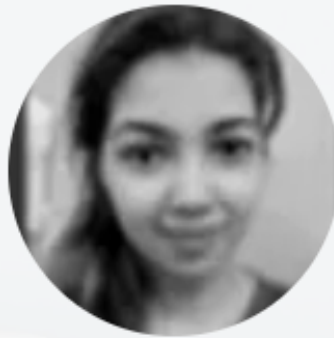


# TESTIMONIALS OF OUR STUDENTS AND THEIR PLACEMENT DETAILS



Ratna Rekha  
Selected in Infosys

Avneesh is really good in delivering the concepts with good examples. It is a good platform for the people who wanted to know about CSV.



Neha Mehta  
Selected in Ernst & Young (EY), India

The class is good and well understandable, hoping for the best in perspective of career also. Service is very good.

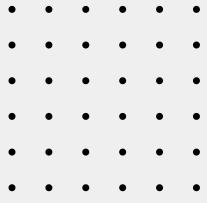


S.R.V. Vivekananda Rao  
Selected in Navitas Lifesciences Bangalore

It was great experience. Company connect consultancy doing great job on trainings following current pharmaceutical industry requirements. Thank you Brajesh sir.



**[For more testimonials click here!](#)**



# 06

## OTHER DETAILS REGARDING THE COURSE

**The Course we offer in is available on the below link**

<https://skillbee.co.in/>

### **Eligibility**

Graduation/ B. tech/ B.Sc./ Pharma/ MBBS/ BDS/ BHS/ BUMS/ BAMS or any other discipline. Diploma holders are eligible for our Executive Diploma, Industry Certificate, and Certificate Programs.

### **Future Career Prospects of the Program**

Computerized System Validation scope is very wide in the field of Pharmaceuticals, Medical Device industry and Clinical Trail Industry. CSV person demand is very high as compare to other courses, relative career growth is 50% higher than other industrial courses. After completion of this course professionals can work as Validation Lead, Assistant Manager, Manager, and goes higher based on his knowledge and skill set.

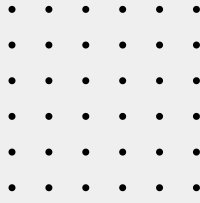
### **Program Duration:**

The candidate is expected to complete the course in 2 months.

### **Registration**

The registration will be carried out by contacting on SkillBee Solution.

How to Apply



## OTHER DETAILS REGARDING THE COURSE

### **Certification and Membership Fees**

Contact on +91-9691633901, +91-8839538846

Landline number: 0731- 3520480

or [info@skillbee.co.in](mailto:info@skillbee.co.in) for details of fees structure.

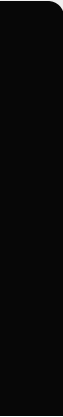
### **Assessment & Certification**

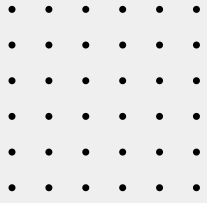
All the participants are expected to appear for online assessment. After successfully qualifying the examination, the participants will be certified as GCP Professional by SkillBee Solution.

### **Placement Assistance & Corporate Relations**

The Institute has partnered with many organizations for providing with placement assistance to its participants. Besides, it has a robust placement cell comprised of senior level Human Resources professionals and Talent Acquisition experts which maintains close links with business and industry.

In recent months the Institute has witnessed more and more participation from professionals working with global pharmaceutical, healthcare and food giants like IQVIA, Dr. Reddy's Laboratories, Aurobindo Pharma, Glenmark Generics, Cipla, Mindtree, Cognizant, Lupin, IVY works, Deloitte, EY, Global software resources, Novartis, Vaisesika, Phillips, Wipro, Wockhardt, Pfizer, Abbott, Medtronic, Foster Corporation, IPCA Laboratories, Calyx, Mother Dairy, Bliss GVS Pharma, Al Rawabi, Almarai, Green Pastures, SeQuent, PepsiCo India, Mankind, Beryl Drugs, Allergy Therapeutics, CFTRI, Ciron, Sun Pharmaceutical, GlaxoSmithKline, Ranbaxy, Biocon etc.





## BENEFITS OF JOINING THE CERTIFICATION COURSE

- Free Membership for one year to avail chat with our lecturer and other members of the same group
- Free access to study material worth 70,000 INR at any time with membership for one year.
- Free access to Interview based question and answer.
- Mock interview class
- 100 % Placement Assistance (not guaranteed)
- Two consecutive batches can be Joined with same fees
- Recordings of class will be available for 30 days from day 1 of class on website to recall and create your own notes
- Resume preparation assistance



## CONTACT INFORMATION



**Company Connect Consultancy Head Office:**  
17 A Suryadev Nagar, Indore, 452009

**Branch:** 5-46/1 Chanda Nagar Hyderabad, 500050

**PH:** +91-9691633901, +91- 889538846

**Landline Number:** 0731-3520480

**Mail:** [info@skillbee.co.in](mailto:info@skillbee.co.in)

**Website:** <https://skillbee.co.in/>

