



SKILLBEE SOLUTION



2 MONTH ADVANCE PROGRAMME



<https://skillbee.co.in/>



CONTENT

- 01** COMPANY OVERVIEW
- 02** MODULES FOR CERTIFICATION IN PROJECT MANAGEMENT PROGRAM
- 03** CERTIFICATION COURSES WE OFFER
- 04** ADVISORY FACULTY FROM INDUSTRY
- 05** TESTIMONIALS OF OUR STUDENTS AND THEIR PLACEMENT DETAILS
- 06** OTHER DETAILS REGARDING THE COURSE
- 07** BENEFITS OF JOINING CERTIFICATION COURSE
- 08** CONTACT INFORMATION

COMPANY OVERVIEW

01



VISION



SkillBee Solution, our vision is to empower individuals and organizations through high-quality training and certification programs, enabling them to acquire the knowledge, skills, and credentials necessary for personal and professional success in the rapidly evolving world. We strive to be a leading institute that fosters lifelong learning, innovation, and excellence, shaping the future workforce and contributing to societal progress.

COMPANY OVERVIEW



ABOUT US



SkillBee Solution, ISO 9001: 2015 certified company (certificate number: IMC-CTCY-22-0513477), registered under the Registration Act, 1958 with Government of India Registration Number C/1788348 and affiliated with Life Sciences Sector Skills Council (SSC) - presents unique, friendly and interactive platform to get rid of all your GMP related glitches.

MODULES FOR CERTIFICATION IN PROJECT MANAGEMENT PROGRAM

02

MODULES FOR CERTIFICATION IN
PROJECT MANAGEMENT PROGRAM



Module 1: Introduction to Project Management

Module 2. Linking Strategy to Project Management

Module 3. Portfolio Approach to Project Management

Module 4. Project/ Portfolio Selection & Organisational Strategy

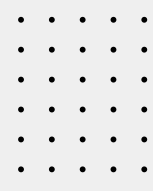
Module 5. Harvard Business Simulation - Project Management

Module 6. selection of Project Life Cycle waterfall, V-Model and Agile Methodolgy

Module 7. Project Planning & Scope

Module 8. Project Scheduling

Module 9. Project Cost Estimation



MODULES FOR CERTIFICATION IN PROJECT MANAGEMENT PROGRAM

Module 10. Project Quality Management (Change Control, Deviation, Incident)

Module 11. Theory of constraints & Critical Chain Project Management

Module 12. Project Monitoring: Time & Cost Evaluation

Module 13. Adaptive & Agile Project Management (Scrum, Kanban Method)

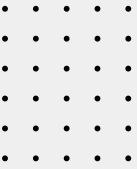
Module 14. Project Stakeholder & Communication Management

Module 15. Risk Analysis of Projects

Module 16. Project Procurement & Contract Management

Module 17. Integration-based Project Delivery and Closure

Module 18. Behavioral & Leadership aspects of Project Management



MODULES FOR CERTIFICATION IN PROJECT MANAGEMENT PROGRAM

Module 19. Negotiation Skills

Module 20: Emerging Trends in Project Management

Module 21: Design Thinking in Project Management

Module 22: Reflection/ PMP Tips & Tricks

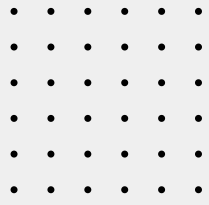
CERTIFICATION COURSES WE OFFER

03

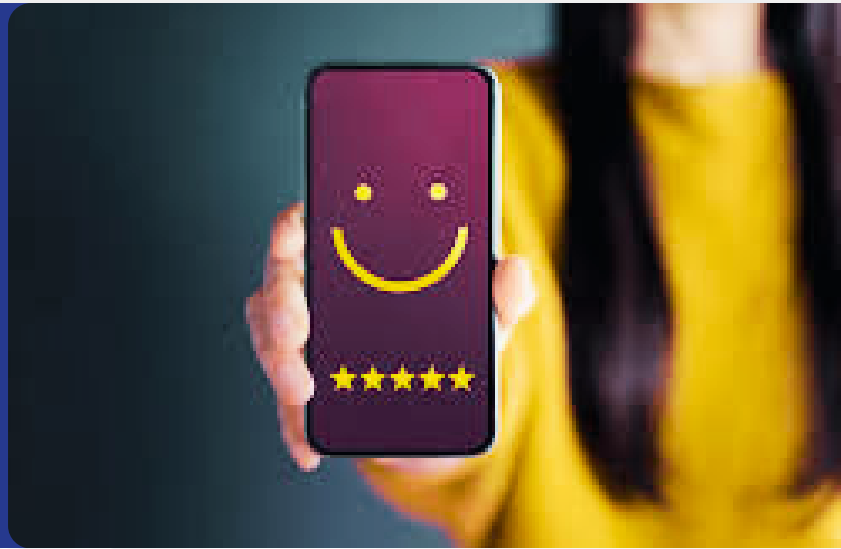
- Computerized System Validation
- Basic Laboratory Information Management Systems (LIMS)
- Advance Administrative Laboratory Information Management Systems (LIMS)
- Integrated Industrial training and certification in Pharmacovigilance, Clinical research, Clinical data management systems and Medical Writing
- Pharmacovigilance + Clinical Research Professional Certification
- Clinical data management + Clinical Research Professional Certification
- Medical Writing + Clinical Research Professionals Certification
- Pharmaceutical Regulatory Affairs Certification
- Pharmaceutical Quality Assurance professional training certification
- Pharmaceutical Validation Professional training
- Pharmaceuticals GMP Professionals Certification
- Pharmaceutical Engineering Professionals Certification
- Project Management Programme (PMP)

ADVISORY FACULTY FROM INDUSTRY

Apart from regular faculty members, eminent and dynamic industrial professionals having rich industrial experience of up to 20-25 years have got associated with SkillBee Solution in regular, part-time, distance cum e-learning and Continuing Education Program (CEP). The industrial professionals who have joined SkillBee Solution in this initiative have worked in reputed pharmaceutical companies like Ranbaxy Laboratories Ltd, Cadila Pharma Ltd, Dr.Reddy's Laboratories, Quintiles, IPCA, Cipla etc. in the areas of GMP, GLP, Clinical Research, QA/QC, IPR, Regulatory Affairs, Drug Discovery, Public Health, Medical Coding etc. The continuing education training program has been launched with an initiative to provide training to work force in the industry on specific topics in short time period and to quick fix the issues with possible solutions by having an interface with senior industrial professionals.



TESTIMONIALS OF OUR STUDENTS AND THEIR PLACEMENT DETAILS



Narendrapal Singh

Selected in Infosys

It's good platform to achieve the goal under the guidance of experience tutor faculty.



Bhumika Barve

Selected in Mindtree

Good staff for Computerized System Validation. Everyone is ready to help anytime.



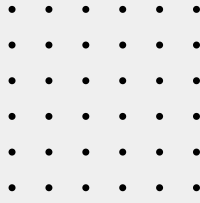
Saurabh Mashalkar

Selected in Cognizant, Hyderabad

Great learning Experience. Very helpful and informative.



[For Google Review Click here](#)

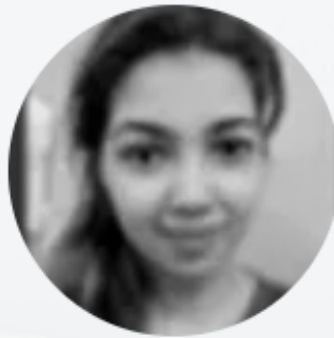


TESTIMONIALS OF OUR STUDENTS AND THEIR PLACEMENT DETAILS



Ratna Rekha
Selected in Infosys

Avneesh is really good in delivering the concepts with good examples. It is a good platform for the people who wanted to know about CSV.



Neha Mehta
Selected in Ernst & Young (EY), India

The class is good and well understandable, hoping for the best in perspective of career also. Service is very good.

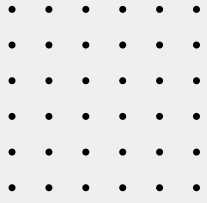


S.R.V. Vivekananda Rao
Selected in Navitas Lifesciences Bangalore

It was great experience. Company connect consultancy doing great job on trainings following current pharmaceutical industry requirements. Thank you Brajesh sir.



[For more testimonials click here!](#)



06

OTHER DETAILS REGARDING THE COURSE

The Course we offer in is available on the below link

<https://skillbee.co.in/>

Eligibility

Graduation/ B. tech/ B.Sc./ Pharma/ MBBS/ BDS/ BHS/ BUMS/ BAMS or any other discipline. Diploma holders are eligible for our Executive Diploma, Industry Certificate, and Certificate Programs.

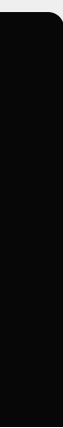
Program Duration:

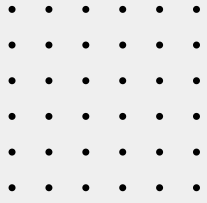
The candidate is expected to complete the course in 2 months.

Registration

The registration will be carried out by contacting on SkillBee Solution.

How to Apply





OTHER DETAILS REGARDING THE COURSE

Certification and Membership Fees

Contact on +91-9691633901, +91-8839538846
Landline number: 0731- 3520480
or info@skillbee.co.in for details of fees structure.

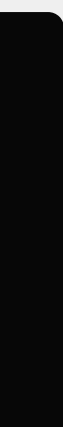
Assessment & Certification

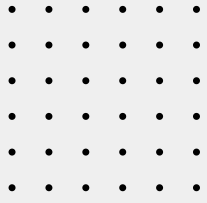
All the participants are expected to appear for online assessment. After successfully qualifying the examination, the participants will be certified as GCP Professional by SkillBee Solution.

Placement Assistance & Corporate Relations

The Institute has partnered with many organizations for providing with placement assistance to its participants. Besides, it has a robust placement cell comprised of senior level Human Resources professionals and Talent Acquisition experts which maintains close links with business and industry.

In recent months the Institute has witnessed more and more participation from professionals working with global pharmaceutical, healthcare and food giants like IQVIA, Dr. Reddy's Laboratories, Aurobindo Pharma, Glenmark Generics, Cipla, Mindtree, Cognizant, Lupin, IVY works, Deloitte, EY, Global software resources, Novartis, Vaisesika, Phillips, Wipro, Wockhardt, Pfizer, Abbott, Medtronic, Foster Corporation, IPCA Laboratories, Calyx, Mother Dairy, Bliss GVS Pharma, Al Rawabi, Almarai, Green Pastures, SeQuent, PepsiCo India, Mankind, Beryl Drugs, Allergy Therapeutics, CFTRI, Ciron, Sun Pharmaceutical, GlaxoSmithKline, Ranbaxy, Biocon etc.





BENEFITS OF JOINING THE CERTIFICATION COURSE

- Free Membership for one year to avail chat with our lecturer and other members of the same group
- Free access to costly study material at any time with membership for one year.
- Free access to Interview based question and answer.
- Mock interview class
- 100 % Placement Assistance (not guaranteed)
- Two consecutive batches can be Joined with same fees
- Recordings of class will be available for 60 days from day 1 of class on website to recall and create your own notes
- Resume preparation assistance

CONTACT INFORMATION



Company Connect Consultancy Head Office:
17 A Suryadev Nagar, Indore, 452009

Branch: 5-46/1 Chanda Nagar Hyderabad, 500050

PH: +91-9691633901, +91- 889538846

Landline number: 0731- 3520480

Mail: info@skillbee.co.in

Website: <https://skillbee.co.in/>

