



SKILLBEE SOLUTION

BASIC LABORATORY INFORMATION MANAGEMENT SYSTEMS (LIMS) PROFESSIONAL CERTIFICATION COURSE



1 MONTH
WEEKDAYS OR WEEKEND CLASSES BASED
ON SUITABILITY



<https://skillbee.co.in/>



CONTENT

- 01** COMPANY OVERVIEW
- 02** MODULES FOR BASIC LABORATORY INFORMATION MANAGEMENT SYSTEMS (LIMS)
- 03** CERTIFICATION COURSES WE OFFER
- 04** ADVISORY FACULTY FROM INDUSTRY
- 05** TESTIMONIALS OF OUR STUDENTS AND THEIR PLACEMENT DETAILS
- 06** OTHER DETAILS REGARDING THE COURSE
- 07** BENEFITS OF JOINING CERTIFICATION COURSE
- 08** CONTACT INFORMATION

COMPANY OVERVIEW

01



VISION



SkillBee Solution, our vision is to empower individuals and organizations through high-quality training and certification programs, enabling them to acquire the knowledge, skills, and credentials necessary for personal and professional success in the rapidly evolving world. We strive to be a leading institute that fosters lifelong learning, innovation, and excellence, shaping the future workforce and contributing to societal progress.

COMPANY OVERVIEW



ABOUT US



SkillBee Solution, ISO 9001: 2015 certified company (certificate number: IMC-CTCY-22-0513477), registered under the Registration Act, 1958 with Government of India Registration Number C/1788348 and affiliated with Life Sciences Sector Skills Council (SSC) - presents unique, friendly and interactive platform to get rid of all your GMP related glitches.

MODULES FOR BASIC LABORATORY INFORMATION MANAGEMENT SYSTEMS (LIMS) 7.0.2 VERSION

02

BASIC LABORATORY INFORMATION
MANAGEMENT SYSTEMS (LIMS) 7.0.2 VERSION



Module 1. LIMS Functionality and Technology, Flow Chart-LIMS, URS, how to create LIMS Master Data – Analysis, Product, Sample plan & Item code

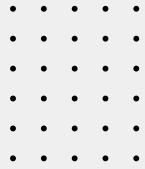

Module 2. Defining Business Requirements For LIMS (User Requirements Specification) –Initiation phase

- Validation Life-Cycle Approach through GxP Computerized systems-Initiation phase

Module 3. LIMS GXP Assessment, Validation plan-FRA, FCS, IQ, OQ and PQ, how to create LIMS Master Data –Inventory

Module 4. Configuration testing in Dev.- environment, Functional Testing in Quality environment, UAT Testing in Prod-environment, Basic awareness of Crystal reports

Module 5. How to prepare the LIMS Validation summary Report, Environmental monitoring Module Workflow.



MODULES FOR BASIC LABORATORY INFORMATION MANAGEMENT SYSTEMS (LIMS) 7.0.2 VERSION

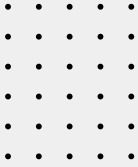

Module 6. LIMS Architecture, Creation of Master data inventory and Inventory management workflow

Module 7. Lot Management Workflow, Laboratory workflow and Master data instrument creation and Instrument Management workflow

Module 8. Stability Management-Introduction, Stability storage Location management and Stability management entire workflow

Module 9. LIMS Administration activities: User Management, Data Migration, Object package creation, installation and scheduler management in LIMS ,Investigation Management-LIMS.

Module 10. System Overview Description with diagrams (a concise nontechnical description of the functionality and operation of the LIMS covering all interconnected systems), which for complex systems should be a separate document providing a description of the systems that may be used to describe the system to a regulator



MODULES FOR BASIC LABORATORY INFORMATION MANAGEMENT SYSTEMS (LIMS) 7.0.2 VERSION

- System Architecture with details of hardware with diagrams
- Data Architecture with details of the sources, uses, and ownership of each static data item
- System landscape showing the interactions of the various instances of the application
- Interfaces with diagrams (including networks, systems, and analytical equipment)
- List of software modules with details of versions, standard software products (e.g. spreadsheet packages), etc.
- Number of users, user hierarchy, and response time required from LIMS
- Software design documentation
- Server environmental conditions including power supplies
- Client PC user interface software configuration details and terminal emulation requirements
- Functional descriptions of LIMS operations
- Business Continuity (Contingency) Plans, maintenance, and operating procedures
- Application software and reports
- Security and access control methods

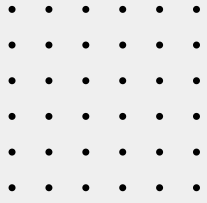
CERTIFICATION COURSES WE OFFER

03

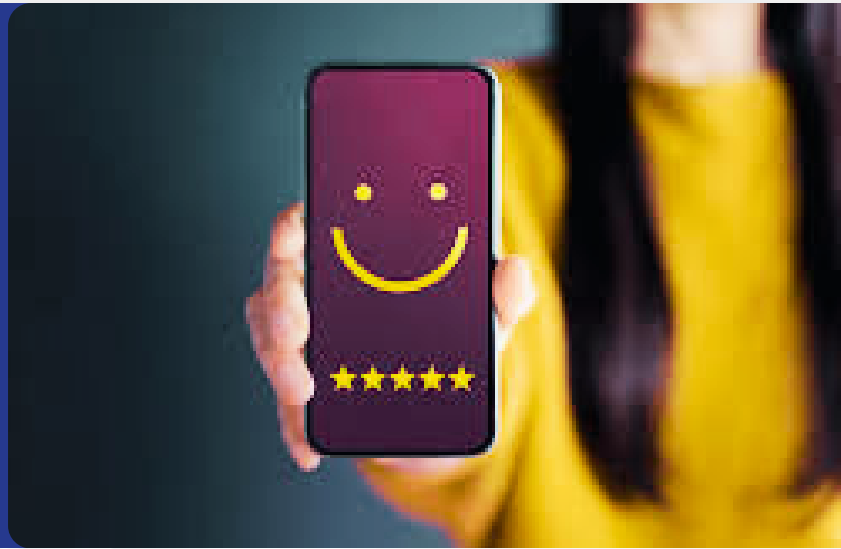
- Computerized System Validation
- Basic Laboratory Information Management Systems (LIMS)
- Advance Administrative Laboratory Information Management Systems (LIMS)
- Integrated Industrial training and certification in Pharmacovigilance, Clinical research, Clinical data management systems and Medical Writing
- Pharmacovigilance + Clinical Research Professional Certification
- Clinical data management + Clinical Research Professional Certification
- Medical Writing + Clinical Research Professionals Certification
- Pharmaceutical Regulatory Affairs Certification
- Pharmaceutical Quality Assurance professional training certification
- Pharmaceutical Validation Professional training
- Pharmaceuticals GMP Professionals Certification
- Pharmaceutical Engineering Professionals Certification
- Project Management Programme (PMP)

ADVISORY FACULTY FROM INDUSTRY

Apart from regular faculty members, eminent and dynamic industrial professionals having rich industrial experience of up to 20-25 years have got associated with SkillBee Solution in regular, part-time, distance cum e-learning and Continuing Education Program (CEP). The industrial professionals who have joined SkillBee Solution in this initiative have worked in reputed pharmaceutical companies like Ranbaxy Laboratories Ltd, Cadila Pharma Ltd, Dr.Reddy's Laboratories, Quintiles, IPCA, Cipla etc. in the areas of GMP, GLP, Clinical Research, QA/QC, IPR, Regulatory Affairs, Drug Discovery, Public Health, Medical Coding etc. The continuing education training program has been launched with an initiative to provide training to work force in the industry on specific topics in short time period and to quick fix the issues with possible solutions by having an interface with senior industrial professionals.



TESTIMONIALS OF OUR STUDENTS AND THEIR PLACEMENT DETAILS



Narendrapal Singh

Selected in Infosys

It's good platform to achieve the goal under the guidance of experience tutor faculty.



Bhumika Barve

Selected in Mindtree

Good staff for Computerized System Validation. Everyone is ready to help anytime.



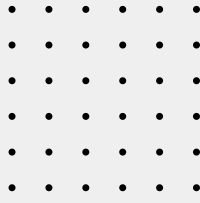
Saurabh Mashalkar

Selected in Cognizant, Hyderabad

Great learning Experience. Very helpful and informative.



[For Google Review Click here](#)



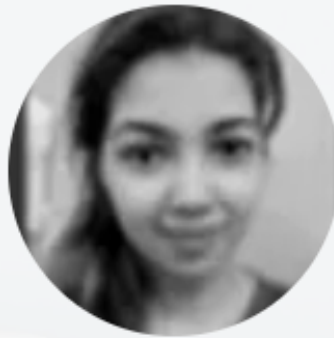
TESTIMONIALS OF OUR STUDENTS AND THEIR PLACEMENT DETAILS



Ratna Rekha

Selected in Infosys

Avneesh is really good in delivering the concepts with good examples. It is a good platform for the people who wanted to know about CSV.



Neha Mehta

Selected in Ernst & Young (EY), India

The class is good and well understandable, hoping for the best in perspective of career also. Service is very good.



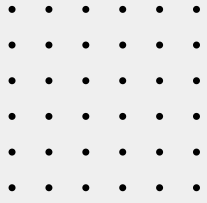
S.R.V. Vivekananda Rao

Selected in Navitas Lifesciences Bangalore

It was great experience. Company connect consultancy doing great job on trainings following current pharmaceutical industry requirements. Thank you Brajesh sir.



[For more testimonials click here!](#)



06

OTHER DETAILS REGARDING THE COURSE

The Course we offer in is available on the below link

<https://skillbee.co.in/>

Eligibility

Graduation/ B. tech/ B.Sc./ Pharma/ MBBS/ BDS/ BHS/ BUMS/ BAMS or any other discipline. Diploma holders are eligible for our Executive Diploma, Industry Certificate, and Certificate Programs.

Program Duration:

The candidate is expected to complete the course in 1 month, Weekdays or weekend classes based on suitability

Registration

The registration will be carried out by contacting on SkillBee Solution.

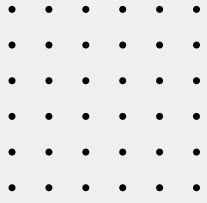
How to Apply

Certification and Membership Fees

Contact on +91-9691633901, +91-8839538846,

Landline number: 0731- 3520480

or info@skillbee.co.in for details of fees structure.



OTHER DETAILS REGARDING THE COURSE

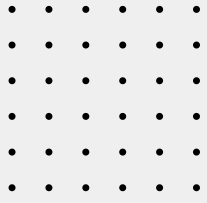
Assessment & Certification

All the participants are expected to appear for online assessment. After successfully qualifying the examination, the participants will be certified as GCP Professional by SkillBee Solution.

Placement Assistance & Corporate Relations

The Institute has partnered with many organizations for providing with placement assistance to in its participants. Besides, it has a robust placement cell comprised of senior level Human Resources professionals and Talent Acquisition experts which maintains close links with business and industry.

In recent months the Institute has witnessed more and more participation from professionals working with global pharmaceutical, healthcare and food giants like IQVIA, Dr. Reddy's Laboratories, Aurobindo Pharma, Glenmark Generics, Cipla, Mindtree, Cognizant, Lupin, IVY works, Deloitte, EY, Global software resources, Novartis, Vaisesika, Phillips, Wipro, Wockhardt, Pfizer, Abbott, Medtronic, Foster Corporation, IPCA Laboratories, Calyx, Mother Dairy, Bliss GVS Pharma, Al Rawabi, Almarai, Green Pastures, SeQuent, PepsiCo India, Mankind, Beryl Drugs, Allergy Therapeutics, CFTRI, Ciron, Sun Pharmaceutical, GlaxoSmithKline, Ranbaxy , Biocon etc.



BENEFITS OF JOINING THE CERTIFICATION COURSE

- Free Membership for one year to avail chat with our lecturer and other members of the same group
- Free access to costly study material at any time with membership for one year.
- Free access to Interview based question and answer.
- Mock interview class
- 100 % Placement Assistance (not guaranteed)
- Two consecutive batches can be Joined with same fees
- Recordings of class will be available for 30 days from day 1 of class on website to recall and create your own notes
- Resume preparation assistance

CONTACT INFORMATION



Company Connect Consultancy Head Office:
17 A Suryadev Nagar, Indore, 452009

Branch: 5-46/1 Chanda Nagar Hyderabad, 500050

PH: +91-9691633901, +91- 889538846

Landline Number: 0731-3520480

Mail: info@skillbee.co.in

Website: <https://skillbee.co.in/>

